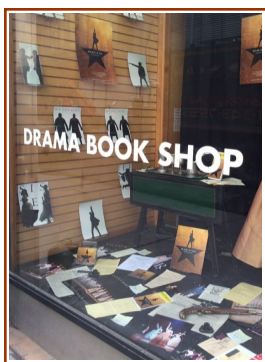


SAVORING THE CLASSICAL TRADITION IN DRAMA

ENGAGING PRESENTATIONS BY
THE SHAKESPEARE GUILD
IN PROUD COLLABORATION WITH
THE NATIONAL ARTS CLUB
THE PLAYERS, NEW YORK CITY
THE ENGLISH-SPEAKING UNION



— SALUTING A UNIQUE INSTITUTION ♦ Monday, November 26



Founded in 1917 by the Drama League, the **Drama Book Shop** became an independent store in 1923. Since 2001 it has been located on West 40th Street, where it provides a variety of services to the actors, directors, producers, and other theatre professionals who work both on and off Broadway. Many of its employees are young performers, and a number of them take part in events at the Shop's lovely black-box auditorium. In 2011 the store was recognized by a *Tony Award for Excellence in the Theatre*. Not surprisingly, its beneficiaries (among them playwrights **Eric Bogosian**, **Moises Kaufman**, **Lin-Manuel Miranda**, **Lynn Nottage**, and **Theresa Rebeck**), have responded

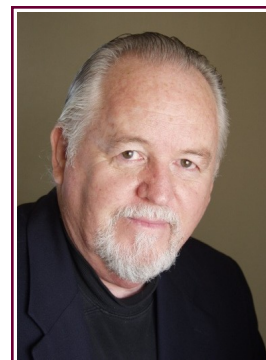
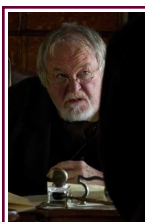


THE PLAYERS
16 Gramercy Park South
Manhattan
RECEPTION 6:30, PANEL 7:00
Admission Free
Reservations Requested

with alarm to reports that high rents may force the Shop to relocate or close. Sharing that concern, we joined **The Players** and such notables as actors **Jim Dale**, **Jeffrey Hardy**, and **Peter Maloney**, and writer **Adam Gopnik** to rally support for a cultural treasure.

DAKIN MATTHEWS ♦ Monday, January 28

We look forward to a special evening with **DAKIN MATTHEWS**, a versatile artist who is now appearing in Aaron Sorkin's acclaimed Broadway dramatization of *To Kill a Mockingbird*. In 2015 Dakin portrayed Churchill, opposite Helen Mirren's Queen Elizabeth II, in the Broadway transfer of *The Audience*. In 2012 he played Senator Carlin in Gore Vidal's *The Best Man*. In 2011 he earned plaudits for two roles at the **New York Shakespeare Festival**. And in 2003 his script for a staging of *Henry IV*, starring his former **Juilliard** student Kevin Kline as Falstaff, won a **Drama Desk** award. Dakin's many film credits include *Lincoln*, *Nuts*, *Thirteen Days*, and the Coen brothers' *True Grit*. And



his TV roles have endeared him to fans of *Dallas*, *Desperate Housewives*, *House*, *NYPD Blue*, *The West Wing*, and *Two and a Half Men*. A founding member of **The Acting Company**, he's also headed the **Berkeley Shakespeare Festival** and the **California Actors Theatre**.

NATIONAL ARTS CLUB
15 Gramercy Park South
Manhattan
PROGRAM 8:00 P.M.
Admission Free, But
Reservations Requested

SIR IAN MCKELLEN PAYS TRIBUTE TO SIR RICHARD EYRE

We'll soon be announcing additional attractions in the **GUILD's** signature **SOS** series. In the meantime it's a pleasure to note that on Sunday, October 14, in London's venerable **Guildhall**, we paid tribute to this year's recipient of the *Gielgud Award for Excellence in the Dramatic Arts*, an honor that was established in April 1994 during a reception at the Folger Shakespeare Library in Washington. Presenting our 2018 trophy was **Sir Ian McKellen**, who received the inaugural *Gielgud Award* in May 1996. He spoke eloquently about *Sir Richard Eyre*, a renowned producer, director, filmmaker, and author who had been our guest on May 15 at **The Players** for an



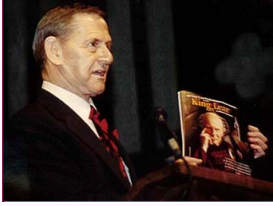
engaging *Speaking of Shakespeare* conversation. For details about a *Gielgud* presentation that was one of the highlights of this season's **UK Theatre Awards** luncheon, visit www.shakesguild.org, and click on the blue links that function as navigating devices.



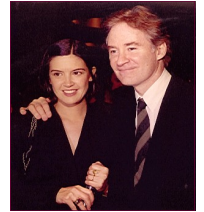
Help the Guild, & Support the Arts EVENTS IN D.C, LONDON, NEW YORK, AND SANTA FE

Founded in 1987, THE SHAKESPEARE GUILD is now in its fourth decade. Since 1994 it has been known primarily for its *GIELGUD AWARD FOR EXCELLENCE IN THE DRAMATIC ARTS*, a trophy created with the warm endorsement of Sir John, and one that has been presented in such venues as the Folger Shakespeare Library and the British Embassy in Washington; the Barrymore Theatre, Lincoln Center, and the National Arts Club in New York; and Middle Temple Hall and the Guildhall in London. *GIELGUD*-related activities have also occurred in a number of other settings, among them BAFTA's Princess Anne Auditorium and the Gielgud Theatre in the West End.

Recipients of the award ~ F. Murray Abraham, Dame Eileen Atkins, Sir Kenneth Branagh, Zoe Caldwell, Dame Judi Dench, Sir Richard Eyre, Sir David Hare, Sir Derek Jacobi, Michael Kahn, Kevin Kline, Sir Ian McKellen, Christopher Plummer, Lynn Redgrave, Vanessa Redgrave, Sir Donald Sinden, and Sir Patrick Stewart ~ have often served as presenters in festivities that recognize their esteemed colleagues. Other notables who've participated in these events include Emanuel Ax, Alan Bennett,



Keith Baxter, Brian Bedford, Samantha Bond, Richard Briers, Helena Bonham Carter, Richard Clifford, John Cleese, Patrick Doyle, Rebecca Eaton, Ben Elton, Clive Francis, Stephen Fry, Bernard Gersten, Ruth Bader Ginsburg, Rupert Goold, Joel Grey, Whoopi Goldberg, Sir Peter Hall, Rosemary Harris, Kitty Carlisle Hart, Hal Holbrook, Bob Hoskins, Tom Hulce, Dana Ivey, Martin Jarvis, Barbara Jefford, David Jones, Barbara Leigh-Hunt, Robert MacNeil, Audra McDonald, Geraldine McEwan, Michael Pennington, Ronald Pickup, George Plimpton, Tony Randall, Ian Richardson, Paul Scofield, Ned Sherrin, Timothy Spall, Toby Stephens, and Jerry Stiller.



Since 1998 the GUILD has also presented *SPEAKING OF SHAKESPEARE*, a conversation series that debuted at the National Press Club in Washington and has enriched audiences in a variety of other locales, among them the Cosmos Club, Ford's Theatre, the Shakespeare Theatre Company, and the University Club in DC, the Chicago Shakespeare Theatre in the Windy City, and the Algonquin Hotel, The Players, the Princeton Club, and the Schimmel Center in Manhattan. Guests have included actors Jane Alexander, Simon Russell Beale, Richard Easton, Henry Goodman, Stacy Keach, Michael Learned, Dakin Matthews, Roger Rees, Prunella Scales, Liev Schreiber, Marian Seldes, Jean Stapleton, Janet Suzman, John Douglas Thompson, Timothy West, and Michael York; directors Bill Alexander, Peter Brook, Robert Brustein, Karin Coonrod, Barry Edelstein, Barbara Gaines, Margot Harley, Jeffrey Horowitz, Tina Packer, Molly Smith, Julie Taymor, and Robert Whitehead; playwrights Edward Albee, Michael Frayn, Ken Ludwig, and Sir Peter Shaffer; and writers Norman Augustine, E.R. Braithwaite, Michael Dirda, Sir Harold Evans, Flora Fraser, Marjorie Garber, Adam Gopnik, Stephen Greenblatt, Anthony Hecht, Peter Holland, Peter Kyle, John Lahr, Peter Marks, John Miller, Judith Martin, Mark Olshaker, Bill Press, Cokie Roberts, Neil Rudenstine, Deborah Tannen, Stanley Wells, Linda Wertheimer, and Garry Wills.



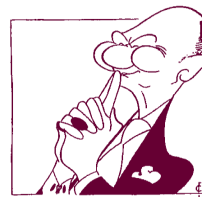
For detail about these and other GUILD offerings, including presentations in the Land of Enchantment that have been taken place at the Lentic Performing Arts Center, the New Mexico Museum of Art, San Miguel Church, the Santa Fe Botanical Garden, and elsewhere, we hope you'll visit www.shakesguild.org and click on the blue links that guide you through our rich and eventful history of cultural and educational programming. We also invite you to visit our *Membership and Reservations* page and become more deeply involved in our endeavors. By design, most of our attractions are admission-free; but of course that does not mean they're cost-free. Like the schools, colleges, libraries, museums, public radio and TV stations, and other nonprofit institutions that we all help with membership dues and donations, the GUILD is in constant need of support from those who cherish its efforts to preserve and enhance a unique artistic and intellectual heritage. We urge you to bear in mind, too, that any contributions that are not offset by benefits received are fully tax-deductible.

For detail about these and other GUILD offerings, including presentations in the Land of Enchantment that have been taken place at the Lentic Performing Arts Center, the New Mexico Museum of Art, San Miguel Church, the Santa Fe Botanical Garden, and elsewhere, we hope you'll visit www.shakesguild.org and click on the blue links that guide you through our rich and eventful history of cultural and educational programming. We also invite you to visit our *Membership and Reservations* page and become more deeply involved in our endeavors. By design, most of our attractions are admission-free; but of course that does not mean they're cost-free. Like the schools, colleges, libraries, museums, public radio and TV stations, and other nonprofit institutions that we all help with membership dues and donations, the GUILD is in constant need of support from those who cherish its efforts to preserve and enhance a unique artistic and intellectual heritage. We urge you to bear in mind, too, that any contributions that are not offset by benefits received are fully tax-deductible.

I wish to make a tax-deductible donation of \$____. Please enroll me as a GUILD member in the __ SUBSCRIBER (\$50), __ CONTRIBUTOR (\$100), __ DONOR (\$250), __ BENEFACTOR (\$500), __ PATRON (\$1,000), __ SPONSOR (\$5,000) category. Please reserve __ space(s) at no charge for Monday, January 28. Please accept my enclosed check for \$____. Please charge \$____ to _ AMERICAN EXPRESS _ MASTERCARD _VISA account number _____ (____/____) CVV____.

Name _____
Address _____
City, State, Zip _____
Phone, E-Mail _____

The material in this form can be submitted online. It can also be transmitted by post, by email, or by telephone. GUILD contact details appear to the right.



*Presenter of the GIELGUD AWARD FOR EXCELLENCE IN THE DRAMATIC ARTS
Established in 1994 to Honor Sir John and to Perpetuate his Legacy*

14 VIA SAN MARTIN
SANTA FE, NM 87506-7543
Office 1-505-988-9560
Mobile 1-505-670-9815

JOHN F. ANDREWS, President

www.shakesguild.org
shakesguild@msn.com

Founded in 1987 and operational since 1994, The Shakespeare Guild is a global nonprofit corporation that celebrates, and endeavors to cultivate larger and more appreciative audiences for, the dramatist who has been applauded in one society after another as our most reliable guide to the mileposts of life.