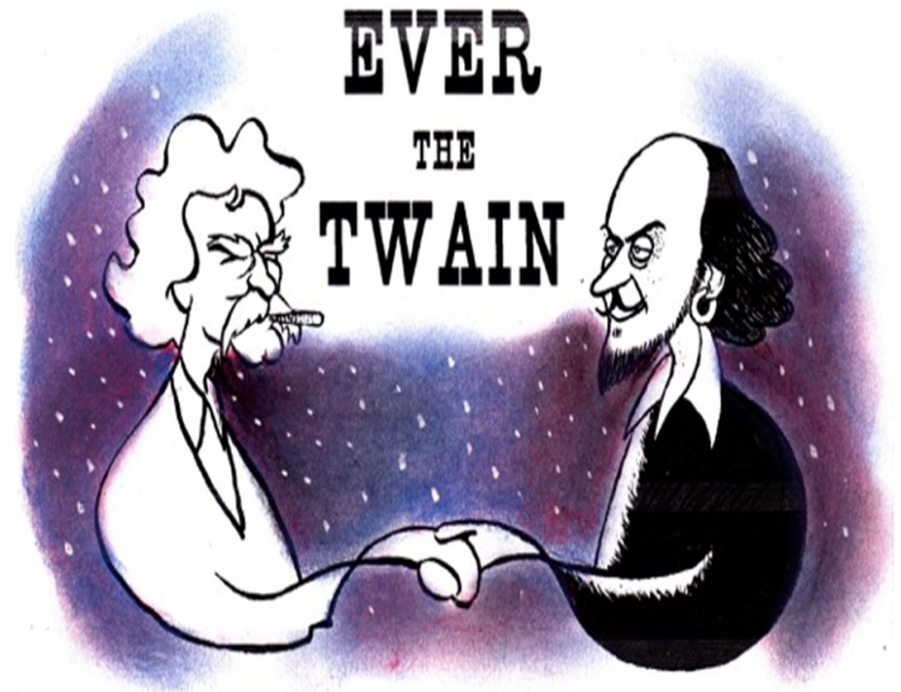


The Lensic is proud to support
KSFR
Santa Fe Public Radio



The
Lensic
Performing Arts Center

Celebrating our
15th anniversary in 2016



WILLIAM SHAKESPEARE
in
MARK TWAIN'S AMERICA

A Benefit Presented at the
Lensic Performing Arts Center to
Support KSFR, a Station Committed to
Bringing the World to Santa Fe
And Santa Fe to the World

7:00 P.M.
SUNDAY, JANUARY 31, 2016



**ACADEMY FOR THE
LOVE OF LEARNINGSM**

LEARN ABOUT...

Learning

TEACHING

Leading

Mentoring

Story

Waking Up

Learn more about what we believe *A love of learning*



505.995.1860

www.aloveoflearning.org

Program Note

Ever the Twain brings William Shakespeare and Mark Twain to the Lensic stage, where we invite you to help us celebrate their achievements, explore Shakespeare's extraordinary impact on 19th-century America, and enjoy some of the comedic fruits of Twain's amusing rivalry with his eminent predecessor.

As the most influential poet in our language, Shakespeare was wildly popular in the United States. He was read, memorized, and performed everywhere, from brothels to Broadway, from Western mining camps to Boston tea parties. He was treated as a fellow citizen by desperadoes and deacons, by raucous Irish stevedores, and by cultivated college boys. He even started a riot.

Twain was keenly aware of Shakespeare's lofty stature, and he devoted considerable energy to competing with him. He was determined to be for the United States (then a provincial backwater in the eyes of most Europeans) what Shakespeare was for the English. So he adapted, distorted, twisted, and parodied the Bard. What's more, he was among the earliest to question whether Shakespeare was the real author of the works attributed to him.

The two men came from similar backgrounds, from small towns where they received limited educations before setting out to make names for themselves. Each rose to the pinnacle of his literary world by dint of special genius and voracious reading. Each was fascinated by the human condition, and each explored it from multiple angles: moral, political, and philosophical, and theological.

In our day Shakespeare is too often relegated to the lonely confines of highbrow, elitist entertainment. In his own period, and later in Twain's, he was a man of the people. We hope that tonight's revelry, with help from an irreverent Mark Twain, will help nudge the Immortal Bard off the pedestal we've erected for him and bring him back to the real world where he belongs.

SANTA FE
PRO MUSICA
THE 34TH SEASON

ST. LAWRENCE STRING QUARTET
February 7, 2016

THE LARK ASCENDING
Santa Fe Pro Musica Orchestra
March 5 & 6, 2016

BAROQUE HOLY WEEK
Santa Fe Pro Musica
Baroque Ensemble
March 24, 25 & 26, 2016

CONRAD TAO IN RECITAL
April 22, 2016

THE EMPEROR
Santa Fe Pro Musica Orchestra
April 23 & 24, 2016

Subscriptions and Single Tickets
santafepromusica.com
505.988.4840



The LENSIC and KSFR
are delighted to present

EVER THE TWAIN

WILLIAM SHAKESPEARE
IN MARK TWAIN'S AMERICA

A Revel Devised By
LOIS RUDNICK and **JONATHAN RICHARDS**

with

BOB MARTIN **VALERIE PLAME** **JONATHAN RICHARDS**
NICHOLAS BALLAS **LESLIE H. DILLEN** **BRYSON HATFIELD**
GEOFFREY POMEROY **TALLIS ROSE**

Music by **TOM COLLINS**

Director
JONATHAN RICHARDS

Executive Producer
LOIS RUDNICK

Associate Producer
BOB MARTIN

Production Manager
ALLISON GOETZMAN

The presentation will last approximately 75 minutes
with no intermission. A panel discussion, chaired
by John F. Andrews, will follow immediately.

Commemorating
Shakespeare 400, a global
celebration of the life, work, and
appeal of the poet immortalized in
the First Folio as “not of an age, but
for all time,” and pleased to be joining
hands with KSFR, the Lensic, the New
Mexico Museum of Art, the Folger
Shakespeare Library, and a great
variety of additional participants
in homage to the playwright’s
“brave new world”



THE
Shakespeare
GUILD

PRESENTER OF THE GIELGUD AWARD FOR EXCELLENCE IN THE DRAMATIC ARTS
Established in 1994 to Honor Sir John and to Perpetuate his Legacy

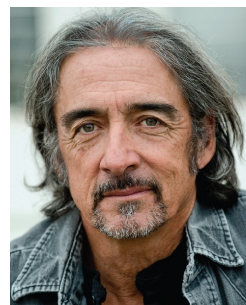
www.shakespeareguild.org

shakespeareguild@msn.com

Founded in 1987, and operational since 1994, The Shakespeare Guild is a global
nonprofit organization that celebrates, and endeavors to cultivate larger and
more appreciative audiences for, the dramatist who has been applauded in
one society after another as our most reliable guide to the mileposts of life.

Our Presenters

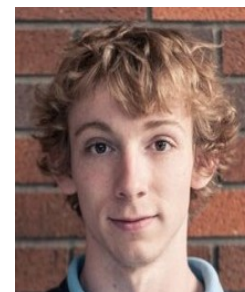
NICHOLAS BALLAS (Player) is a veteran of the local acting scene, with a resume that includes five seasons with Shakespeare in Santa Fe and a variety of other shows. He has portrayed Ahab in *Moby-Dick* at the Mother Road Theatre in Albuquerque, and the title character in *The Incredible Voyage of Captain Hook*. Other film and TV credits include *The Tao of Steve*, *Kickboxer*, and *Independence Day*.



TOM COLLINS (Music) has played on stages from Dalhart, Texas, to Roy, New Mexico, and from Ramallah, West Bank, to Khan Younis, Gaza. His journalism and criticism have appeared in many newspapers and magazines. Since 1977 he has worked primarily in northern New Mexico, primarily at the Santa Fe Playhouse.



LESLIE HARRELL DILLEN (Player) recently presented *The Passions of Mabel Dodge Luhan* at the Santa Fe Playhouse. Her other four solo shows have been performed throughout the U.S. and at the Edinburgh Fringe Festival. She has worked on both television and film, and is familiar to audiences in Boston, Los Angeles, New York, and San Francisco. She is also the author of *A White Notebook: Letters Between Maud Gonne and William Butler Yeats*, a drama that was staged in 2014 by Theaterwork.



BRYSON HATFIELD (Player) is a student at Santa Fe University of Art and Design. A white, middle-class, twenty-something American male, he is aspiring to do as many things in the theatre industry as humanly possible.

ON VIEW FEBRUARY 6 – 28 ONLY!

FIRST FOLIO!

the book that gave us
SHAKESPEARE
as seen from the
Folger SHAKESPEARE
LIBRARY



PUBLIC OPENING • FRIDAY FEBRUARY 5 • 5:30 – 7:30 PM

FREE PUBLIC PROGRAMS

MADE POSSIBLE BY A GRANT FROM THE
NEW MEXICO HUMANITIES COUNCIL



The Mysteries of the Shakespeare First Folio

WEDNESDAY, FEBRUARY 10 • 6:00 – 7:00 PM
First Folio scholar Eric Rasmussen discusses
his riveting journey around the globe in search
of one of the most valuable books in the world.

Collecting Shakespeare: The Story of Henry and Emily Folger

FRIDAY, FEBRUARY 19 • 2:00 PM
A conversation with author
Stephen Grant and John Andrews.
Book signing following the talk.

Shakespeare in New Mexico and the West

SATURDAY, FEBRUARY 20 • 1:00 – 4:00 PM
Join us for intriguing lectures by scholars
Marissa Greenberg and Heather James
and a panel discussion led by Bruce Smith.

Printing Demonstrations by the Palace Press

NEW MEXICO HISTORY MUSEUM
TUESDAY – SUNDAY • 1:30 – 3:30 PM
FREE WITH MUSEUM ADMISSION
113 Lincoln Avenue, on the Plaza in Santa Fe,
across from the New Mexico Museum of Art

New Mexico Museum of Art

107 West Palace Avenue on the Plaza in Santa Fe • 505 476-5072

For more information on all Shakespeare events, visit NMArtMuseum.org/Shakespeare



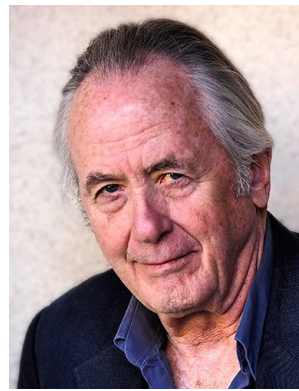
BOB MARTIN (Twain) is General Manager of the Lensic Performing Arts Center. He was an associate producer of *Bodytjak*, a collaborative Indonesian/American project. He has worked with the New City Theater in Seattle and with the Berkeley Jewish Theater, where he co-produced *White Crow: Eichmann in Jerusalem*, with David Selznik. Bob has been a site visitor for the NEA's Theater Program since 1994, and

he has served on the boards for three theaters in San Francisco. Bob has appeared with Ali McGraw and Jonathan Richards in a Lensic presentation of *John Brown's Body*, and each year he reads Christmas stories with these actors and with Carol McGiffin at Collected Works.

VALERIE PLAME (Narrator) is a former covert CIA operations officer, author, wife, mother of twins, and community activist. She is also the author of two novels, *Blowback* and *Burned*, and a memoir, *Fair Game*, which was made into a 2010 film with Sean Penn as her husband, former Ambassador Joseph C. Wilson, and with Naomi Watts portraying Ms. Plame herself. Valerie has provided a great deal of support to the Santa Fe Institute, and she and her family have been happy members of our community since 2007.

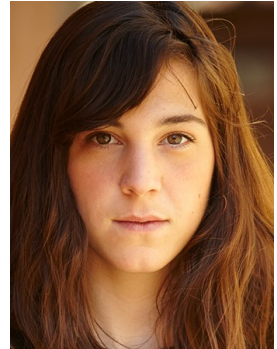


GEOFFREY POMEROY (Player) is a writer and actor, probably best known for *Over the Hedge* (2006), *Monsters and Aliens* (2009), and *Transcendence* (2014). He has appeared in over sixty plays and has acted in numerous films. As a writer his short film, *Hypothetically*, has received several awards for best comedic short film at film festivals around the country. He has scored numerous independent films and plays and has performed as a singer/songwriter extensively both in Los Angeles area and in New York City.



JONATHAN RICHARDS (Shakespeare) is an author, journalist, actor, and cartoonist. His most recent book, *Nick & Jake*, is an epistolary comic novel set in the McCarthy era. His movie reviews appear in *Pasatiempo*. His political cartoons are seen regularly in the *Huffington Post*. He will perform this summer in the New Mexico Actors Lab productions of *Proof* and *Art*.

TALLIS ROSE (Player) is a graduate of Santa Fe University of Art and Design's Theater program. She lives in Albuquerque, but loves making the trip to Santa Fe to work on productions like this.



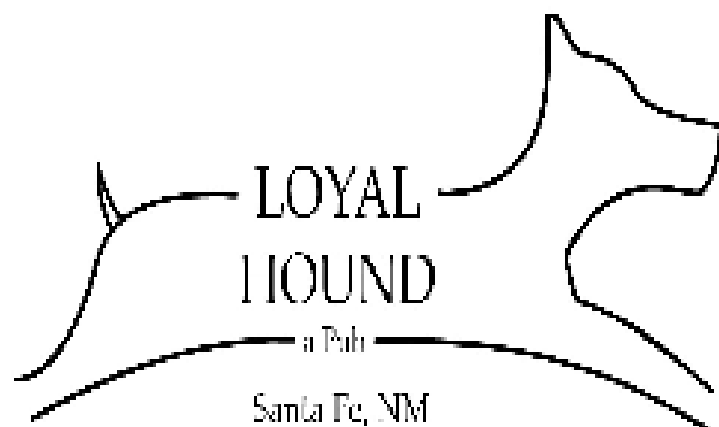
LOIS RUDNICK (Producer) is a retired professor of American Studies from the University of Massachusetts Boston, where she taught for 36 years, including a course on Mark Twain, one of her favorite American authors. She is best known for her books on Mabel Dodge Luhan and her circle, including *Mabel Dodge Luhan: New Woman, New Worlds*. She is a proud member of

the KSFR Public Radio board. *Ever the Twain* is the first dramatic production she has had a hand in, and she has enjoyed working with Jonathan Richards on its script.

JOHN ANDREWS (Panel Moderator) is president of the Shakespeare Guild and a member of the KSFR board. In June 2011 he helped arrange a Lensic event in which Santa Fe Pro Musica joined hands with Sir Derek Jacobi and Richard Clifford for a special production of *The Tempest*, a script that Shakespeare was producing as our Governor's Palace was being constructed.



Come home to modern comfort food,
craft beers, and an eclectic wine list.



730 St. Michael's Drive
The former Hidden Chicken Restaurant

505-471-0440 • loyalhoundpub.com

INTERNATIONAL SHAKESPEARE CENTER

PERFORMANCE • EDUCATION • COMMUNITY

ISC SANTA FE announces THREE WORKSHOPS from LAMDA, the LONDON ACADEMY OF MUSIC AND DRAMATIC ART, one of the finest training conservatories in the world.

Actors of all levels, readers, students, and general public are welcome.
Tickets are limited!



Romeo & Juliet: Clues on Creating Character

Tuesday • February 16 • 5 p.m. • Scottish Rite Temple



Sonnets: Finding Meaning in the Text

Thursday • February 18 • 1:30 p.m. • New Mexico History Museum



Master Class: Shakespeare's First Folio

Friday • February 19 • 5 p.m. • Museum of International Folk Art

For detailed information and tickets:

www.InternationalShakespeare.center/lamda

WWW.INTERNATIONALSHAKESPERE.CENTER

Children Need Nature

Richard Louv
The New Nature Movement

February 21, 2016, 7pm at The Lensic

Best-selling author of *The Nature Principle* and *Last Child in the Woods*, Richard Louv will speak about Nature-Deficit Disorder and the importance of reconnecting with nature—for both children and adults!

Presented by the Santa Fe Waldorf School

General Tickets \$25 - \$125*

Tickets are available at the Lensic Theater Box Office, in person, by phone at 505-988-1234, or online at tickets.santafe.org.

*Premium Tickets include a private reception with Mr. Louv, and a copy of *Last Child in the Woods*. Student Tickets also available.



Santa Fe
WALDORF

celebrating inspired education

Support for this event provided by The Lensic.

KSFR salutes the LENSIC PERFORMING ARTS CENTER on its 15th anniversary, and thanks BOB MARTIN and all his colleagues for their extraordinary support of *Ever the Twain*.

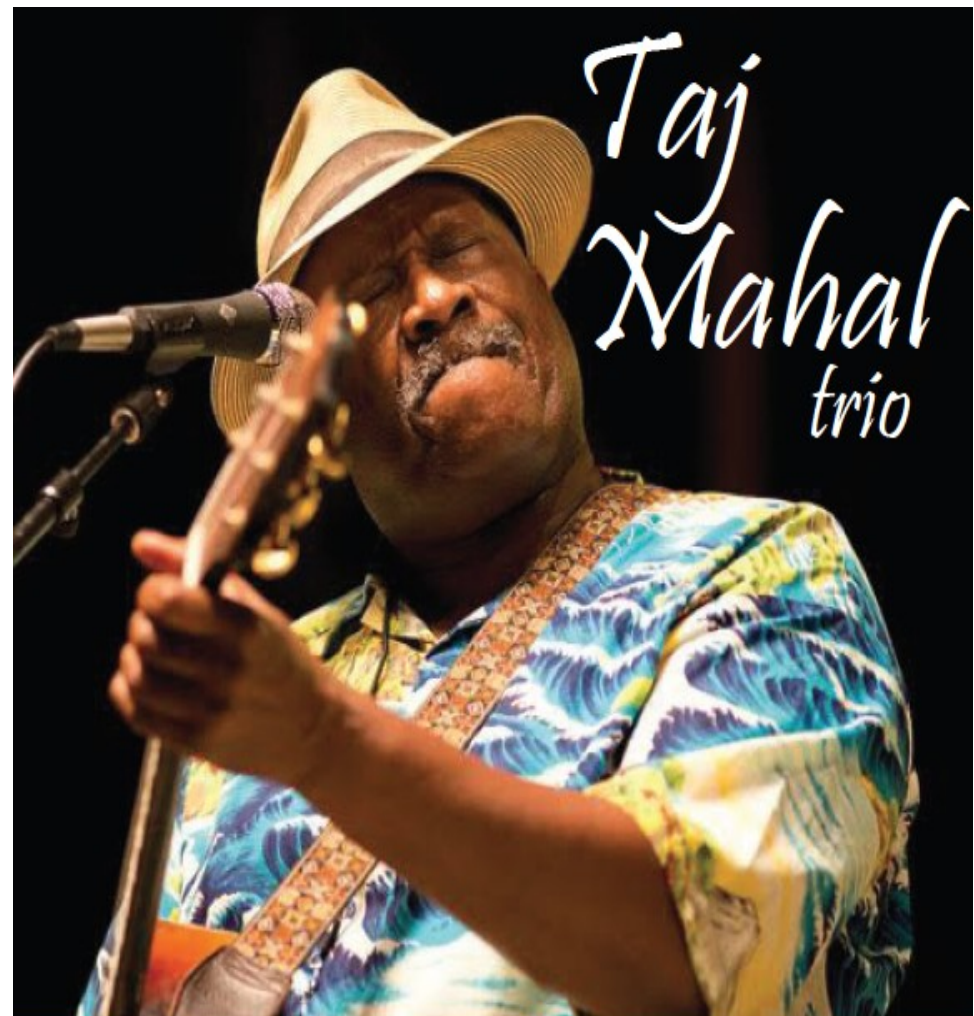
FROM NPR'S HIT NEWS QUIZ SHOW, "WAIT WAIT...DON'T TELL ME"

PAULA POUNDSTONE

THE LENSIC FEBRUARY 4



PURCHASE TICKETS AT THE LENSIC BOX OFFICE – LENSIC.ORG
OR CALL (505) 988 1234



Taj
Mahal
trio

In concert at the Santa Fe
Farmer's Market Pavilion

May 26 7:30 pm

Tickets on sale

www.brownpapertickets.com

This Concert is co-presented by Double D Productions and KSFR Radio

bollywood club invasion

8th Annual east meets west

Dance Party & Benefit

**Fabulous DJ &
Sumptuous Indian Food
Indian Bazaar**

A Sante Fe and Alcohol-Free event

APRIL 30th
7 PM - Midnight
7:30 - Bollywood
Dance Class

SANBUSCO
MARKET
CENTER



Proceeds to benefit local cancer center and projects

Got Pain?



Resolve chronic joint and muscular pain with Egoscue certified posture therapy.

- * Customized movement programs
- * Free introductory workshops

Pain Free Santa Fe
painfreesantafe.net

474-4164



TRULY LOCAL

DID YOU KNOW?

Buying "green" means buying local. When you buy produce at a large grocery store, your food travels an average of 1,500 miles! This long-distance travel results in increased pollution, carbon emissions, and waste.

When you buy produce at the
SANTA FE FARMERS' MARKET,
your food travels than 100 miles and is grown by people who nurture the earth and foster healthy soil and water.



WWW.SANTAFEFARMERSMARKET.COM
WWW.FARMERSMARKETINSTITUTE.ORG

BUY GREEN!
BUY LOCAL!

WINTER MARKET HOURS: Saturdays, 8^{am}-1^{pm}



**Pink House
Antiques**

1925 Rosina
Street
505.428.0889

Rare
Set of 6
Renaissance
Portuguese
chairs with
embossed
leather
seats;
walnut and
oak, solid.

pink-house-antiques.com

