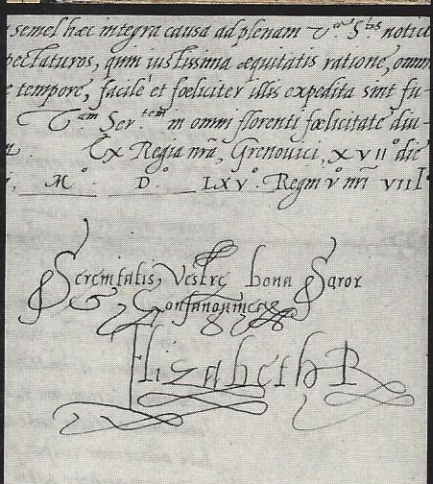
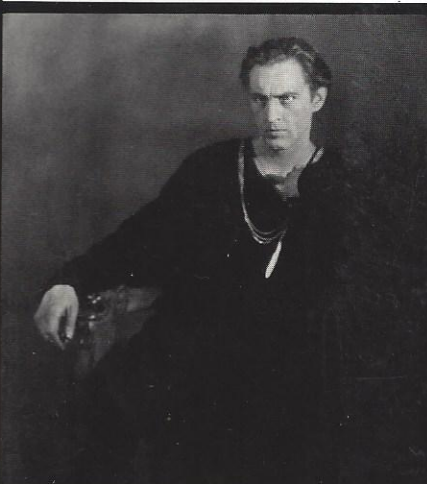
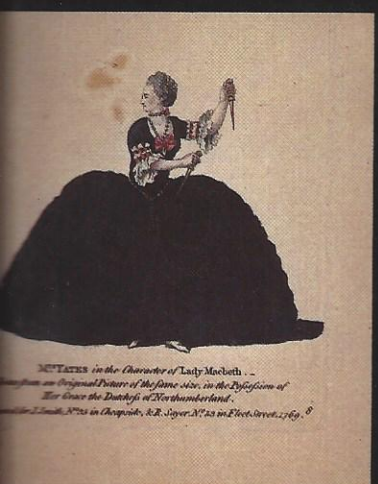
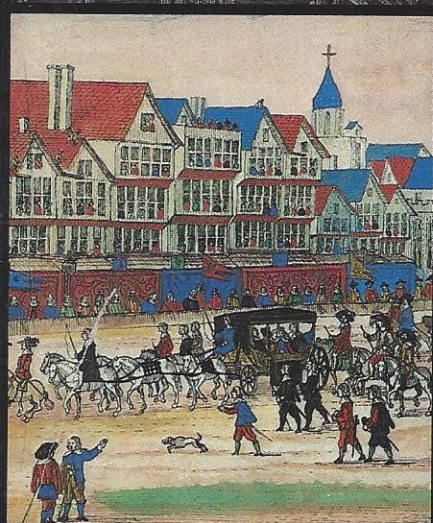
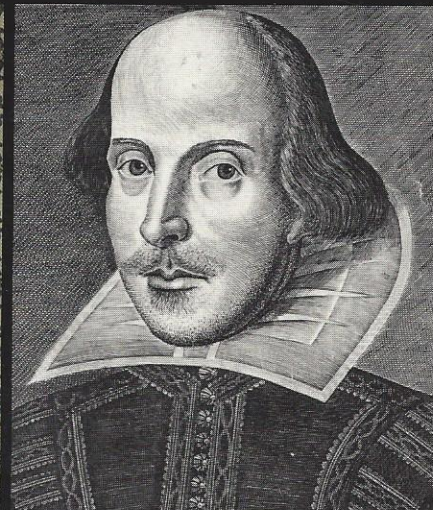
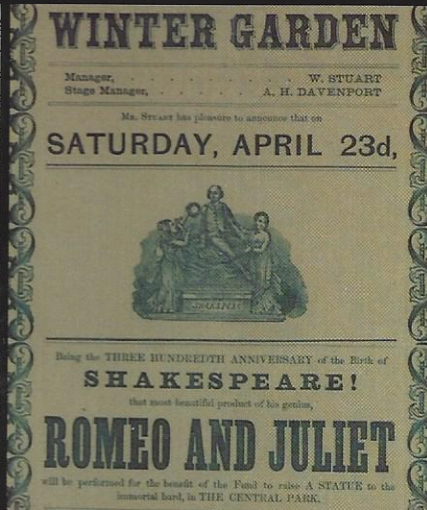
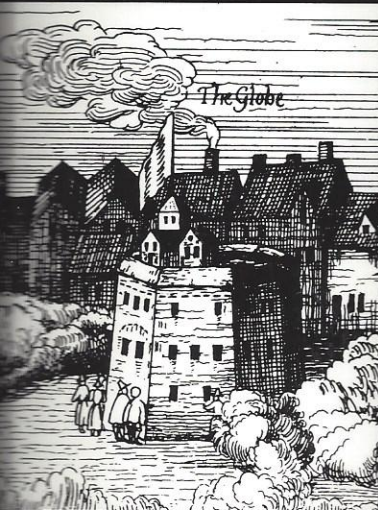


Shakespeare

THE GLOBE & THE WORLD

S. SCHOENBAUM





*****AUTO**ALL FOR ADC 870

S117 P1

###

00040963

Dr. John F. Andrews

Ms. Janet A. Denton

5B Calle San Martin

Santa Fe NM 87506-7536



MIX

Paper from
responsible sources

FSC

www.fsc.org

FSC® C010897



The Folger on Tour

No production in the Folger's history reached a wider audience than *Shakespeare: The Globe and the World*, a traveling exhibition that opened in San Francisco in October 1979. Launched while the Folger's Reading Room was closed for renovation, the show attracted hundreds of thousands from coast to coast. It was a once-in-lifetime event, and host cities made the most of it. In Kansas

City, nearly every schoolchild from St. Louis to Denver saw the exhibition, and universities held a three-month "Mid-American Shakespearean Chautauqua." In Dallas and Atlanta, NEH-funded "actors in residence" spent weeks at local campuses. On the final weekend in Pittsburgh, Princess Grace of Monaco performed scenes from Shakespeare. And in New York, where a lecture by playwright Tom

Stoppard kicked off the run, the *Times* hailed the exhibition as "instructive and continuously amusing," singling out Sam Schoenbaum's companion book as "a palpable hit."

Learn more about our 2016 tour of the First Folio to all 50 states at www.folger.edu/firstfoliotour

